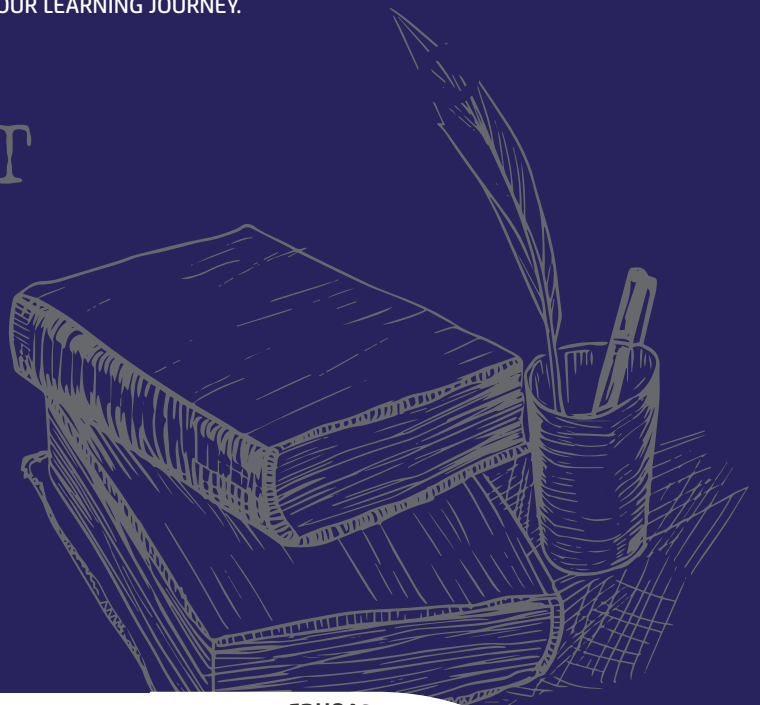


# Learning Journey

## ENGLISH

EVERYTHING YOU STUDY WITHIN ENGLISH AT WASHINGTON ACADEMY IS DESIGNED TO BUILD UPON AND DEVELOP YOUR PRIOR UNDERSTANDING OF READING, WRITING AND ORACY. OUR CURRICULUM IS DESIGNED TO ENSURE THAT YOU CAN DEVELOP THE HIGHER LEVELS OF LITERACY REQUIRED TO ACCESS ALL AREAS OF THE WIDER CURRICULUM AND ENABLE YOU TO ACHIEVE HIGH ACADEMIC STANDARDS AS YOU PROGRESS TOWARDS THE NEXT STAGE OF YOUR LEARNING JOURNEY.

### THE TEMPEST



EDUQAS LANGUAGE PAPER 1 (FICTION) LANGUAGE PAPER 2 (NON-FICTION)

YEAR  
**11**

Shall I compare thee to a summer's day?  
Thou art more lovely, and more temperate.  
Rough winds do shake the darling buds of

May,

And summer's lease hath all too short a date.

Sometime too hot the eye of heaven shines,

And often his fair complexion dimmed;

And even from fair sometime declines,  
By over-lushings of ripe fall from heaven,

Or nature's changing course, untrimmed;

But thy eternal summer shall not fade,

Nor lose possession of that fair thou ow'st,

Nor shall death brag thou wander'st in his shade,

When in eternal summer shall we grow'st.

So long as men can breathe, or eyes can see,

So long lives this, and this gives life to thee.

TRANSACTIONAL WRITING

EDUQAS LANGUAGE PAPER 2 (NON-FICTION) SPEAKING & LISTENING

EDUQAS LANGUAGE PAPER 1 (FICTION)

YEAR  
**10**

OTHELLO

CONFLICT POETRY

INSPIRATIONAL PEOPLE (NON-FICTION EXTRACTS)



NOUGHTS AND CROSSES (PLAY ADAPTATION)

YEAR  
**9**

THE TEMPEST BY WILLIAM SHAKESPEARE

### A MIDSUMMERS NIGHT'S DREAM

RELATIONSHIP POETRY

ADVENTURES AROUND THE WORLD (NON-FICTION)

ANIMAL FARM BY GEORGE ORWELL

YEAR  
**8**

POETRY FROM OTHER CULTURES

INTRODUCTION TO SHAKESPEARE – A MIDSUMMERS NIGHT'S DREAM

ENVIRONMENT AND CLIMATE CHANGE (NON-FICTION)

### GREAT EXPECTATIONS

GREAT EXPECTATIONS BY CHARLES DICKENS

YEAR  
**7**

